

**Pensacola Bay General Sailing Instructions**  
**Approved by Pensacola Bay Yacht Club Fleet Captains**  
**Approved for 2024 - 2025 – Effective February 19, 2024**

---

**1 RULES**

- 1.1 The regatta shall be governed by the rules as defined in the Racing Rules of Sailing (RRS).
- 1.2 The organizing authority (OA) shall be the host club and managed by its Race Committee (RC).

---

**2 NOTICES TO COMPETITORS**

- 2.1 Notices to competitors shall be posted on the official notice board of the host club. The Notice of Race (NOR) shall state its location.

---

**3 CHANGES TO SAILING INSTRUCTIONS**

- 3.1 Any change to the Sailing Instructions (SI's) shall be made through the Supplemental Sailing Instructions (SSI's) and shall be posted before 0900 on the day it shall take effect unless this time is changed in the SSI's. Any change to the schedule of races shall be posted by 1800 on the day before it shall take effect.

---

**4 SIGNALS MADE ASHORE**

- 4.1 Signals made ashore shall be displayed from the flagpole. The SSI's shall state its location.
- 4.2 When Flag AP is displayed ashore, "1 minute" is replaced with "not less than 30 minutes." (*This changes RRS Race Signals*)

---

**5 SCHEDULE OF RACE & SUPPLEMENTAL SAILING INSTRUCTIONS**

- 5.1 The SSI's shall be provided by the host club no less than 24 hours before the first warning signal for the first race of the regatta.

---

**6 CLASS FLAGS**

- 6.1 Class flags are as follows:
  - Catalina 22 - Pink
  - Racing Class - Light Blue
  - Cruising Class - Purple
  - As assigned - Dark Green
  - As assigned - Light Green

---

**7 RACING AREA**

- 7.1 The SSI's shall show the racing area.
- 7.2 For Government Mark Courses, please refer to NOAA Nautical Chart 11383 for details.

---

**8 THE COURSES**

- 8.1 Courses are described in Appendix B
- 8.2 For courses using Fixed or Government Marks and no later than the Warning Signal, the RC Signal Vessel shall display the course to be sailed and the side the marks must be rounded or passed.

- 8.2.1. If different courses are to be used for different fleets, the course shall be listed following a course board indicating that fleet (ex. Racing/Cruising).
- 8.2.2. If the race committee displays a course board "PIN", this shall indicate the drop mark used as the starting pin shall also be a mark of the course, which shall be rounded to port unless otherwise indicated.
- 8.3 For Dropped Mark Courses:
  - 8.3.1 If a course board indicates a drop mark course (example: W2, TW, TL) the letters shall indicate a drop mark course and the sub-script shall indicate the number of laps.
  - 8.3.2 No later than the Warning Signal, the RC Signal Vessel shall display, and broadcast on RC Channel, the course to be sailed in accordance with RRS Appendix S. The marks are to be rounded to port.
  - 8.3.3 The RC shall attempt to set an offset mark to port of the associated windward mark (looking upwind). However, if it is absent, boats shall proceed to the gate, leeward mark, or finish line.
  - 8.3.4 The RC shall attempt to set a gate at the end of the downwind. However, if only one mark is dropped, boats shall round it to port.

## **9 MARKS**

---

- 9.1 For Dropped Mark Courses:
  - 9.1.1 Course marks shall be inflatable orange tetrahedrons. Starting marks may be other than tetrahedrons.
  - 9.1.2 New marks, as provided in SI 12, are inflatable yellow tetrahedrons.
  - 9.1.3 Starting marks shall be two RC vessels displaying orange flags. If two RC vessels are not used, one starting mark shall be a dropped course mark.
  - 9.1.4 Finishing shall be two RC vessels displaying blue flags. If two RC vessels are not used, one finish mark shall be a dropped course mark.
- 9.2 For Government Mark Courses:
  - 9.2.1 Course marks shall be found in Appendix B. The Subscript P (port) or S (starboard), when displayed after a mark, indicates the side of the boat on which the mark is to be passed. The last mark listed may serve as the pin end of the finish.
  - 9.2.2 Starting marks shall be two RC vessels displaying orange flags. If two RC vessels are not used, one mark shall be a dropped course mark or a nearby mark of the course.
  - 9.2.3 Finishing marks shall be two RC vessels displaying blue flags. If two RC vessels are not used, one mark shall be a dropped course mark or a nearby mark of the course.

## **10 AREAS THAT ARE OBSTRUCTIONS**

---

- 10.1. Areas that are obstructions shall be listed in the Supplemental Sailing Instructions.

## **11 THE START**

---

- 11.1 The starting line shall be between a staff displaying an orange flag on the RC Signal Vessel and a staff displaying an orange flag on the RC starting pin vessel or the course side of the starting mark if only one starting boat is used.
- 11.2 Boats whose warning signal has not been made shall keep clear of the starting area and of all boats racing.
- 11.3 Prior to the warning signal, sailors shall comply with 19.2.
- 11.4 A buoy may be tethered to the stern of the RC Signal Vessel to act as a 'standoff mark'.
- 11.5 After the start, the RC may attempt to notify boats that broke RRS 29 or 30 by hail via a loudspeaker and/or broadcast on the designated VHF channel. Failure to hail or broadcast or failure of a boat to hear such hails shall not be grounds for redress. *(This changes RRS 62.1 (a))*

## **12 CHANGING THE NEXT LEG OF THE COURSE**

---

- 12.1 Only For Dropped Mark Courses:

To change the next leg of the course, the RC shall lay a new mark (or move the finishing line) and remove the original mark as soon as practicable. When in a subsequent change and a new dropped mark is replaced, it shall be replaced by an original dropped mark.

### **13 THE FINISH**

---

- 13.1 The finishing line shall be between a staff displaying a blue flag on the RC Signal Vessel and a staff displaying a blue flag on the RC finishing pin vessel or the course side of the nearby finishing mark.

### **14 NOT USED**

---

### **15 PENALTY SYSTEM**

---

- 15.1 Competitors taking a Two-Turn Penalty or One-Turn Penalty shall give notice to the RC finish line vessel immediately upon finishing that they took a Two-Turn Penalty or One-Turn Penalty per RRS. Other information may also be given to fully identify the incident (leg of course, boat protesting, etc.) in case a Protest is lodged. *(This changes RRS 44)*

### **16 TIME LIMITS**

---

- 16.1 Time limits shall be defined in SSI's.

### **17 HEARING REQUESTS - PROTESTS AND REDRESS**

---

- 17.1 The protest time limit is 60 minutes after the RC Signal Vessel docking time or the race committee signals no more racing today, whichever is later. The RC Signal Vessel shall make a sound signal when it is docked. The time shall be posted on the official notice board.
- 17.2 The last two sentences of RRS 61.1(a) are changed to 'When her protest shall concern an incident in the racing area that she was involved in or saw she shall hail 'Protest'. She shall inform the Race Committee at the finishing line immediately after finishing of the boat(s) being protested or as soon as practicable after she retires.'
- 17.3 Protests shall be written on US SAILING Protest Forms available from US Sailing [https://www.ussailing.org/wp-content/uploads/2022/01/US\\_Sailing\\_Hearing\\_Request\\_Form\\_20210301\\_Fillable.pdf](https://www.ussailing.org/wp-content/uploads/2022/01/US_Sailing_Hearing_Request_Form_20210301_Fillable.pdf). Protests shall be returned to the PRO or filed electronically at the location designated in the NOR.
- 17.4 The time and place of protest hearings and the approximate order in which protests shall be heard shall be posted on the official notice board as soon as possible after the race committee boat has docked which may be after the end of protest time limit. Parties to the protest and witnesses shall remain available at the place of the hearing.
- 17.5 A competitor may be a member of a Protest Committee subject to RRS 63.4.

### **18 SCORING**

---

- 18.1 The low-point scoring system of RRS Appendix A shall be used except there shall be no excluded races.
- 18.2 Section A3 of the RRS is changed as follows:
- 18.2.1 Corrected finish times calculated using handicaps, or ratings, shall be rounded to the nearest whole second.
- 18.2.2 When there is a tie at the finish of a race on computer-calculated corrected times, the tie breaker rules in RRS Appendix A shall be used.
- 18.2.3 When a tie remains, the points for the place for which the boats have tied shall be assigned as provided in the RRS.

## **19 SAFETY AND SPECIAL REGULATIONS**

---

- 19.1 Boats shall monitor the designated VHF channel while racing. The RC recommends boats begin monitoring the designated VHF channel at least 30 minutes before the scheduled start of the first race.
- 19.2 Prior to the warning signal, for the first race of the day, each boat shall pass astern of the RC Signal Vessel on starboard displaying, or hailing her sail numbers, with all crew members on deck wearing their life jackets and receiving an acknowledgment from the RC.
- 19.3 Crew members' attention is drawn to RRS 1.2 Life-Saving Equipment: "Each competitor is individually responsible for wearing personal buoyancy adequate for the conditions." A Lifejacket or Harness shall be worn when alone on deck, reefed, the true wind speed is 25 knots or more, or when the visibility is less than 1 nautical mile.
- 19.4 A boat retiring from the race shall notify the RC before leaving the course or, if that is not possible, notify the host yacht club immediately upon arriving ashore.

## **20 REPLACEMENTS OF CREW OR EQUIPMENT**

---

- 20.1 Substitution of competitors shall not be allowed without prior written approval of the RC.
- 20.2 Substitution of damaged or lost equipment shall not be allowed unless authorized by the RC. Requests for substitution shall be made to the RC at the first reasonable opportunity.

## **21 RADIO COMMUNICATIONS**

---

- 21.1 The designated RC VHF channel shall be 72. Supplemental Sailing Instructions may identify a different VHF channel the host club shall use.
- 21.2 Except when required by a rule, RC broadcasts concerning its intentions; the course to be sailed, starting times, course changes, etc. are a courtesy only. Failure of the RC to make a courtesy broadcast, the timing of a broadcast, or the failure of a boat to hear a broadcast shall not be grounds for redress under RRS 62.1(a).
- 21.3 Victor (V) flag displayed indicates monitor communications channel for safety instructions (RRS37).

## **22 PRIZES**

---

- 22.1 Prizes shall be defined in the Notice of Race.

## **23 DISCLAIMER OF LIABILITY**

---

- 23.1 Competitors participate in the regatta entirely at their own risk. See RRS 4, Decision to Race. The OA will not accept any liability for material damage or personal injury or death sustained in conjunction with or prior to, during, or after the regatta.

## **24 INSURANCE**

---

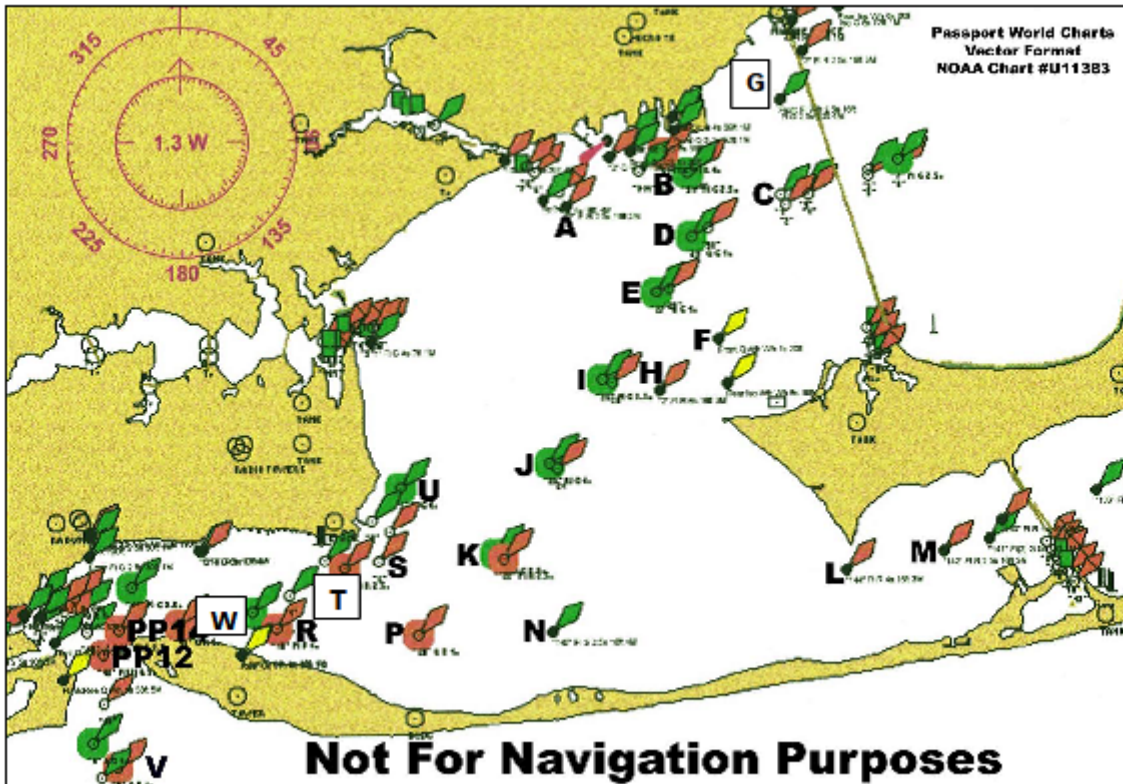
- 24.1 Each participating boat shall be insured with a valid third-party liability insurance with a minimum cover of \$300,000 per incident or the equivalent.

# Appendix A

Intentionally Left Blank – Refer to RRS Appendix S

# Appendix B GOVERNMENT MARKS RACE

Refer to NOAA Nautical Chart #11383 for details



Appendix C Government Marks Lat/Lons				
Updated chart information on 7/18/2020				
Race mark letter	NOAA Chart Label	Mark Location Description	Latitude (N)	Longitude (W)
A	FI R 2.5s 17ft 3M "2"	Beginning of Bayou Chico Channel	30° 23.53'	87° 13.73'
B	G "31" FI G 2.5s	South of Plaza De Luna	30° 23.76'	87° 12.57'
C	G C "1"	Three Mile Bridge Channel Marker	30° 23.56'	87° 11.65'
D	G "29" Q G	Bay Channel "29"	30° 23.21'	87° 12.55'
E	G "27" Q G	Bay Channel "27"	30° 22.73'	87° 12.87'
F	Q 21ft	Forward Range Marker for East Channel	30° 22.38'	87° 12.23'
G	FI G 2.5s 20ft 4M	Range Marker West near Three Mile Bridge	30° 24.36'	87° 11.35'
H	FI R 6s 17ft 4M	Fair Point	30° 21.95'	87° 12.81'
I	G "25" FI G 2.5s	Bay Channel "25"	30° 21.98'	87° 13.45'
J	G "23" FI G 4s	Bay Channel "23"	30° 21.28'	87° 13.97'
K	G "21" FI G 2.5s	Bay Channel "21"	30° 20.51'	87° 14.53'
L	FI R 4s 17ft 3M "144"	Deer Point	30° 20.39'	87° 10.94'
M	FI R 2.5s 17ft 3M "142"	Between Deer Point & Pensacola Beach Bridge	30° 20.56'	87° 10.01'
N	FI G 2.5s 17ft 4M "145"	Pensacola Bay off Santa Rosa Island	30° 19.89'	87° 13.89'
P	R "20" Q R	Pensacola Bay off Santa Rosa Island	30° 19.82'	87° 15.30'
R	R "18" FI R 4s	Pensacola Bay off Santa Rosa Island	30° 19.89'	87° 16.69'
S	R N "6"	Turning Basin East NAS Dock	30° 20.45'	87° 15.71'
T	R "4" FI R 2.5s	Turning Basin South NAS Dock	30° TBD	87° TBD
U	FI G 4s "1"	Approx 0.5 NM NE of NAS Docks	30° 20.07'	87° 15.46'
V	R "8" Q R Bell	Caucus Channel (gulf entry) Buoy 8	30° 18.71'	87° 18.30'
W	G "17" FI G 4s	Pensacola Bay North off Santa Rosa Island	30° TBD	87° TBD
X	G "1" FI G 2.5s GONG	Pensacola Pass Sea Buoy	30° 16.26'	87° 17.54'
PP12	R "12" FI (2) R 5s	Pensacola Pass "12"	30° 19.68'	87° 18.41'
PP14	R "14" FI R 2.5s	Pensacola Pass "14"	30° 19.89'	87° 18.28'
The above positions are approximate. While every care has been taken in the preparation of the above list, no Request for Redress and/or liability can be accepted for any loss or damage arising from any error or inaccuracy. Lat/Lon data source NOAA ENC #11383 55th Edition Sep 2018 Updated 3/24/2020.				
These marks and characteristics contained herein were correct as of 3/24/2020. "The Notice to Mariners" should be referred to as any of these marks could be subject to change in appropriate position and characteristics. The individual Race Committee shall endeavor to note and post any changes that may affect this table. Ultimately, it is the responsibility of the competitors to navigate the given course properly.				
Denotes suggested new marks. Lat/Lons will be determined and posted.				

The above positions are approximate. While every care has been taken in the preparation of the above list, no Request for Redress and/or liability can be accepted for any loss or damage arising from any error or inaccuracy. Lat/Long data source NOAA ENC#11383, 07AUG03 update. These marks and characteristics contained herein were current 2/06/03. "The Notice to Mariners" should be referred to as any of these marks could be subject to change in approximate position and characteristics. The individual Race Committees shall endeavor to note and post any changes that may affect this table. **Ultimately, it is the responsibility of the competitors to navigate the given course properly.**