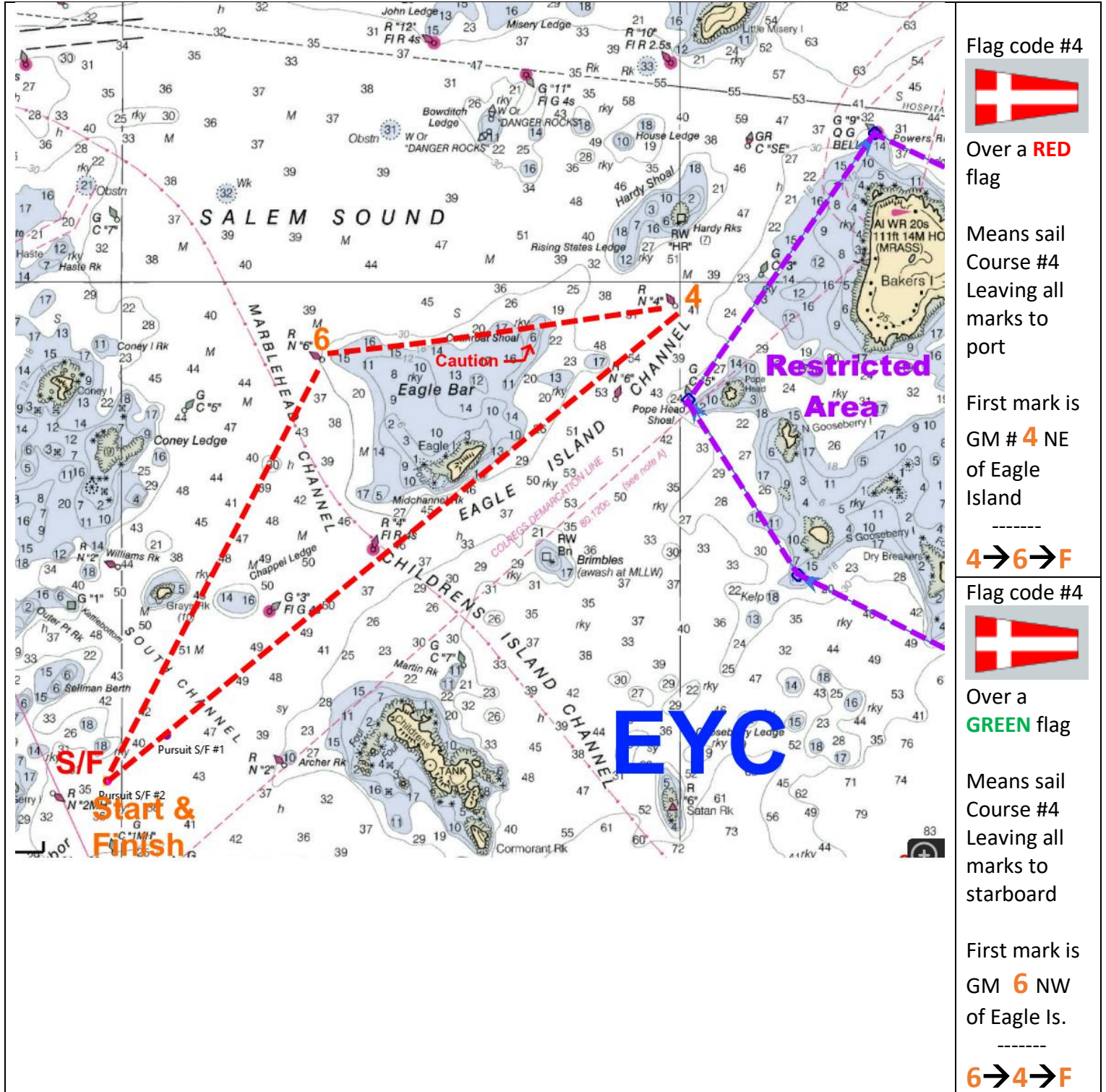


DESCRIPTION of COURSES North 4 and 6

COURSE #4

Course #4 is approximately 4 (4.15) nautical miles long and will be sailed leaving all marks to either port or starboard.

Flags will indicate which direction as shown below the course chart. The start & finish will be between the Signal boat's orange (start) or blue (finish) flag & a green tetrahedron.



Flag code #4



Over a **RED** flag

Means sail Course #4 Leaving all marks to port

First mark is GM # 4 NE of Eagle Island

4→6→F

Flag code #4



Over a **GREEN** flag

Means sail Course #4 Leaving all marks to starboard

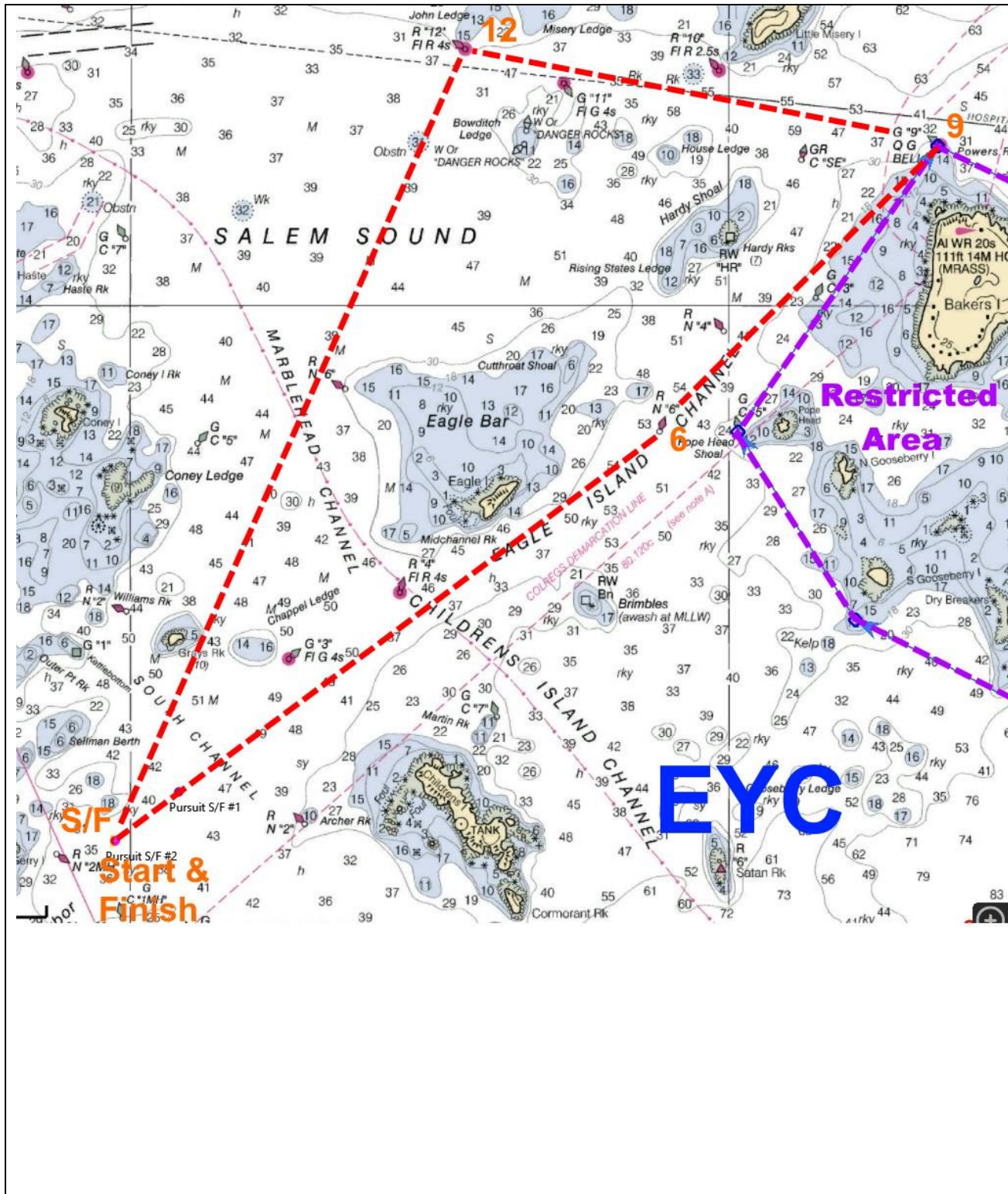
First mark is GM 6 NW of Eagle Is.

6→4→F

COURSE #6

Course #6 is approximately 6 nautical miles long and will be sailed leaving all marks to either port or starboard.

Flags will indicate which direction as shown below the course chart. The start & finish will be between the Signal boat's orange (start) or blue (finish) flag & a green tetrahedron.



Flag code #6



Over a **RED** flag

Means sail Course #6 Leaving all marks to port

First mark is GM # **6** NE of Eagle Island

6 → **9** → **12** → **F**

Flag code #6



Over a **GREEN** flag

Means sail Course #6 Leaving all marks to starboard

First mark is GM **12** in Salem Sound

12 → **9** → **6** → **F**